

GULLIVER RS SERIES

The Riello Gulliver RS5 is a new model of the series of one stage gas burners, characterized for its small dimensions in spite of its high combustion performance. It has been developed to respond to any request for home heating, conforming to current regulations in force.

This model uses the same components designed by Riello for the Gulliver series. The high quality level guarantees safe working.

The burners are fitted with a microprocessor-based burner safety control box which supplies indication of operation and diagnosis of fault cause.

In developing this burner, special attention was paid to reducing noise, the ease of installation and adjustment, to obtaining the smallest size possible to fit into any sort of boiler available on the market.

This model is approved by the EN 676 European Standard and European Directives, Gas Appliance, EMC, Low Voltage, Boiler Efficiency.

The Gulliver RS5 burner is tested before leaving the factory. **Guidelines for installation of burners in conformity to EU Regulation:**

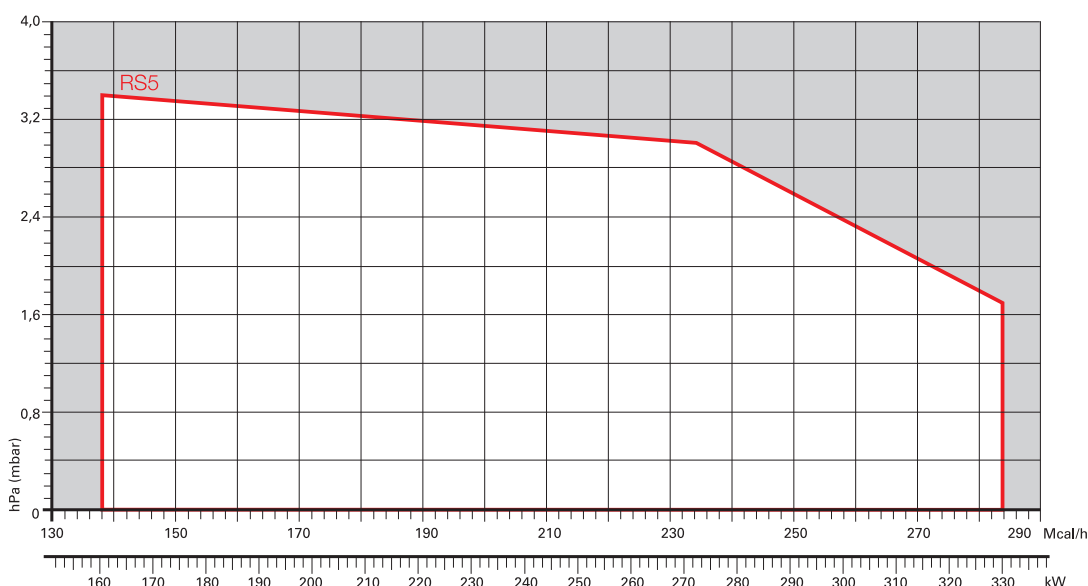
A RIELLO burner (Heat Generator), where it is matched with a water-based boiler (Heater Housing) with a nominal output ≤ 400 kW, providing heat for heating purposes and heat to deliver sanitary hot water, can be installed:

- With boilers (heater housings) already in service in the field, for replacement of identical products, in conformity to Article 1, paragraph 2, point (G) of the EU Regulation No. 813/2013;
- With boilers (heater housings) on a new installation, if they have emissions complying with the requirement of Annex II, paragraph 4 of the EU regulation No. 813/2013.



RS5	160 ÷ 330 kW
RS5 TL	160 ÷ 330 kW

FIRING RATES



Useful working field for choosing the burner

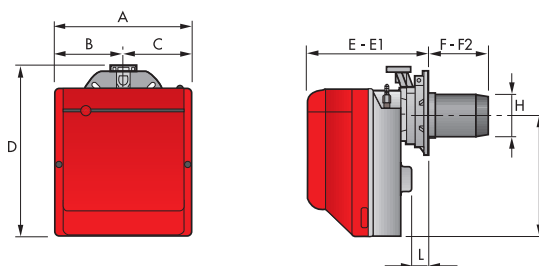
Test conditions conforming to EN676
 Temperature: 20°C
 Pressure: 1013,5 mbar
 Altitude: 0 m a.s.l.

One Stage Gas Burners

GULLIVER RS SERIES

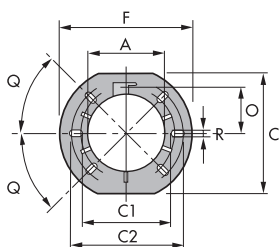
Overall dimensions (mm)

BURNER



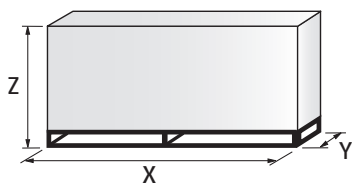
MODEL	A	B	C	D	E	E1	F	F2	H	I	L
▶ RS5	300	150	150	392	278	300	225	203	137	286	45
▶ RS5 TL	300	150	150	392	278	300	382	360	137	286	45

BURNER - BOILER MOUNTING FLANGE



MODEL	A	C	C1	C2	F	O	Q	R
▶ RS5	137	203	170	200	218	80,5	45°	11
▶ RS5 TL	137	203	170	200	218	80,5	45°	11

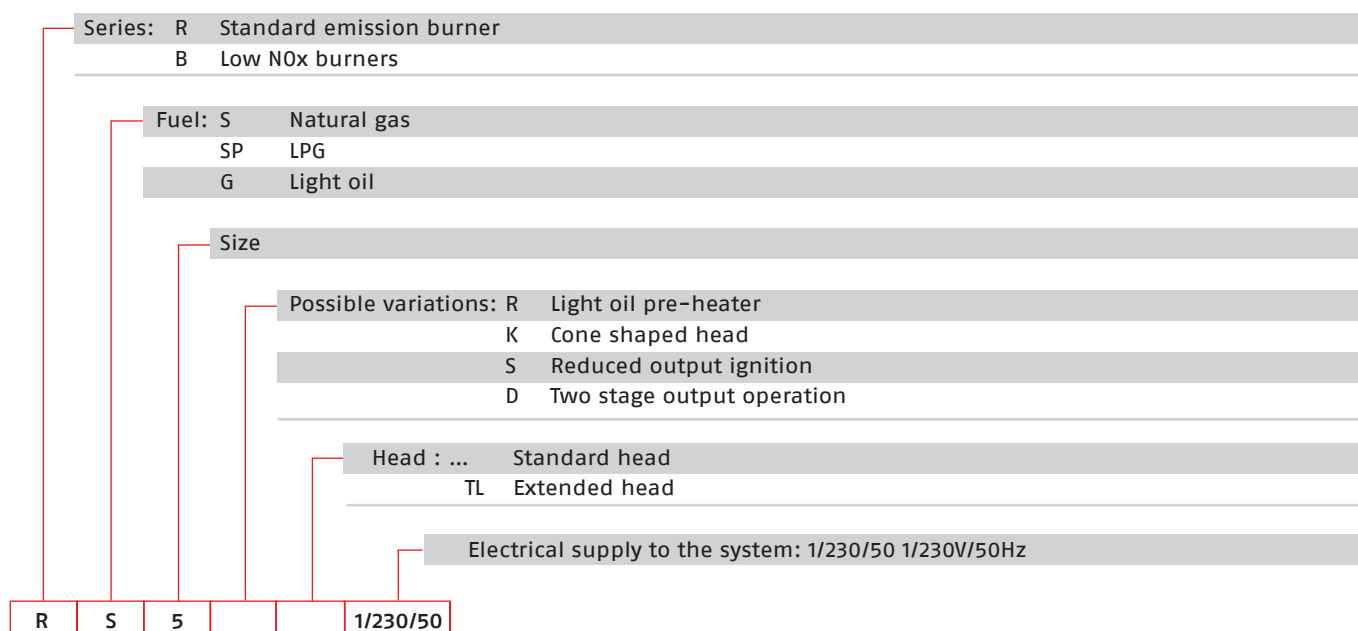
PACKAGING



MODEL	X	Y	Z	kg
▶ RS5	600	345	430	18
▶ RS5 TL	703	335	435	20

Specification

DESIGNATION OF SERIES



STATE OF SUPPLY

Monoblock, gas burner, completely automatic, one stage operation, made up of:

- Fan with forward curve blades
- Cover lined with sound-proofing material
- Air damper, completely closed in stand by, with external adjustment, with no need to remove the cover
- Single phase electric motor 230 V, 50 Hz
- Combustion head fitted with:
 - stainless steel head cone, resistant to high temperatures
 - ignition electrodes
 - ionisation probe
 - gas distributor
 - flame stability disk
- Flame inspection window
- Adjustable air pressure switch, with graduated selector, to guarantee burner lock out in the case of insufficient combustible air
- Microprocessor-based burner safety control box, with diagnostic and remote reset functions
- Protection filter against radio interference (included into burner safety control box)
- IP X0D (IP 40) electric protection level.

Standard equipment:

- Sliding flange
- Flange insulation screen
- Screws and nuts for fixing the flange to the boiler
- 7-pin plug
- Remote control release kit
- Instruction handbook for installation, use and maintenance
- Spare parts catalogue.

One Stage Gas Burners

GULLIVER RS SERIES

Available models

Burners

CODE	MODEL	HEAT OUTPUT		TOTAL ELECTRICAL POWER (kW)	CERTIFICATION	NOTE
		(kW)	NATURAL GAS (Nm ³ /h)			
3761958	RS5 1/230/50	160 - 330	16 - 33	0,430	CE - 0085 BM0114	(1)
20052614	RS5 TL 1/230/50	160 - 330	16 - 33	0,430	CE - 0085 BM0114	(1)

Net calorific value G20: 10 kWh/Nm³ - Density: 0,71 kg/Nm³.

The burners of RS series are in according to EN 676.

(1) With plug and socket.

Gas Trains

GAS TRAIN CODE *	GAS TRAIN MODEL	NATURAL GAS		LPG		NOTE
		BURNER (TYPE)	ADAPTER (CODE)	BURNER (TYPE)	ADAPTER (CODE)	
3970549	MB 410/1 - F3SD 20	RS5		RS5		(1) (2)
3970550	MB 412/1 - F3SD 20	RS5		RS5		(1) (3)
3970558	MB 415/1 - F3SD 30	RS5		RS5		(1)

Please see Designation of Gas Train Series in the page before the Catalogue index.

* Gas trains are 230V/50Hz - 220V/60Hz electrical supply.

(1) With installed plug.

(2) RS5 ≤ 200 kW with natural gas.

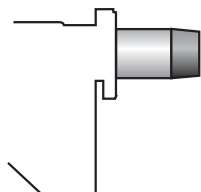
(3) RS5 ≤ 300 kW with natural gas.

The valve seal control device is compulsory (conforming to EN 676) on gas trains to burners with a maximum output over 1200 kW.

To select the gas train please refer to the technical data leaflet and/or instruction manual.

Burner accessories

Extended head kit



Burners standard head can be transformed into "extended head" versions by using the special kit.

BURNER	STANDARD HEAD LENGTH (mm)	EXTENDED HEAD LENGTH (mm)	KIT CODE
► RS5	203 ÷ 225	357 ÷ 372	3001016

LPG kit



For burning LPG gas, a special kit is available to be fitted to the combustion head on the burner, as shown in the following table.

BURNER	KIT CODE FOR STANDARD HEAD	KIT CODE (*)	KIT CODE FOR EXTENDED HEAD
► RS5	3001011	3002737	3001011

(*) Kit for LPG with butane amount over 30%, without CE certification

Burner accessories

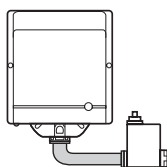
Ground fault interrupter kit



A "Ground fault interrupter kit" is available as a safety device in case of electrical system fault. It is supplied with burners with pin plug.

BURNER	KIT CODE
► RS5	3001180

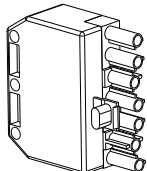
Multibloc rotation kit



There is a special kit available that can be used to install the burner turned 180°. This kit is designed to ensure the gas train valve properly.

BURNER	KIT CODE
► RS5	3001178

7-pin plug kit



If necessary a 7-pin plug kit is available (in packaging of n. 5 pieces).

BURNER	KIT CODE
► RS5	3000945

Gas train accessories

Seal control kit



To test the valve seals on the gas train a special "seal control kit" is available.

GAS TRAIN	KIT CODE for 50 Hz operation	KIT CODE for 60 Hz operation
► MB/1 type	3010123	20050030