

GULLIVER RSD SERIES

The Riello Gulliver RS5D is a new model of the series of two stage gas burners, characterized for its small dimensions in spite of its high combustion performance. It has been developed to respond to any request for home heating, conforming to current regulations in force. This models uses the same components designed by Riello for the Gulliver series. The high quality level guarantees safe working.

The burners are fitted with a microprocessor-based burner safety control box which supplies indication of operation and diagnosis of fault cause.

In developing this burner, special attention was paid to reducing noise, the ease of installation and adjustment, to obtaining the smallest size possible to fit into any sort of boiler available on the market.

This model is approved by the EN 676 European Standard and European Directives, Gas Appliance, EMC, Low Voltage, Boiler Efficiency.

The Gulliver RS5D burner is tested before leaving the factory.

Guidelines for installation of burners in conformity to EU Regulation:

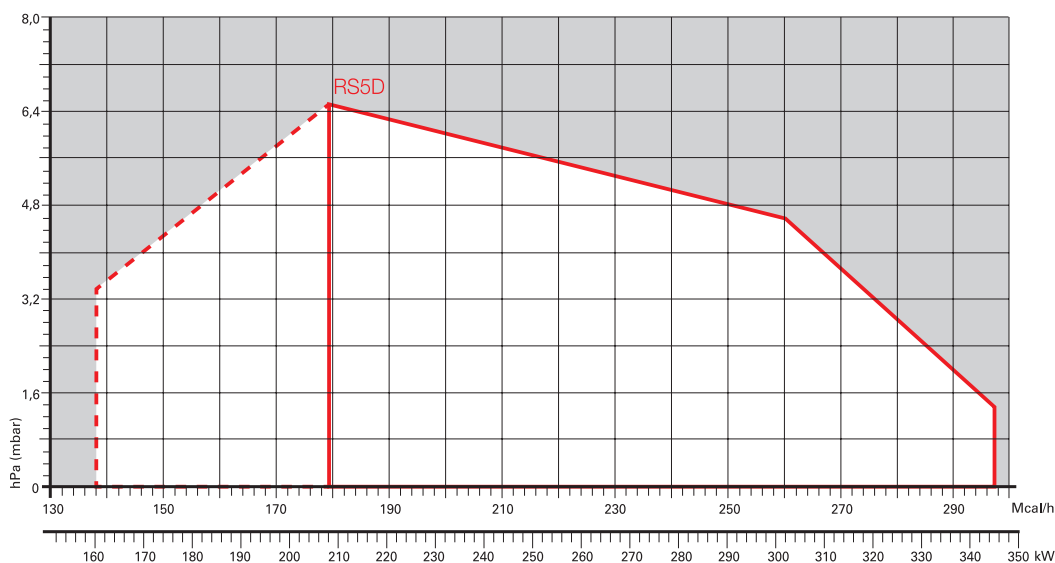
A RIELLO burner (Heat Generator), where it is matched with a water-based boiler (Heater Housing) with a nominal output ≤ 400 kW, providing heat for heating purposes and heat to deliver sanitary hot water, can be installed:

- With boilers (heater housings) already in service in the field, for replacement of identical products, in conformity to Article 1, paragraph 2, point (G) of the EU Regulation No. 813/2013;
- With boilers (heater housings) on a new installation, if they have emissions complying with the requirement of Annex II, paragraph 4 of the EU regulation No. 813/2013.



RS5D	160/208 ÷ 345	kW
RS5D TL	160/208 ÷ 345	kW

FIRING RATES



Useful working field for choosing the burner

1st stage operation range

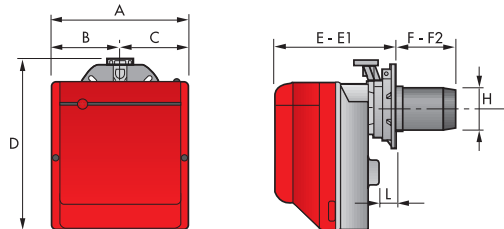
Test conditions conforming to EN676
 Temperature: 20°C
 Pressure: 1013,5 mbar
 Altitude: 0 m a.s.l.

Two Stage Gas Burners

GULLIVER RSD SERIES

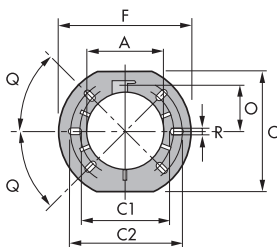
Overall dimensions (mm)

BURNER



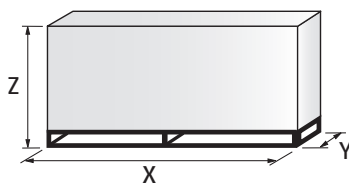
MODEL	A	B	C	D	E	E1	F	F2	H	I	L
▶ RS5D	300	150	150	392	278	300	203	225	137	286	45
▶ RS5D TL	300	150	150	392	278	300	382	360	137	286	45

BURNER - BOILER MOUNTING FLANGE



MODEL	A	C	C1	C2	F	O	Q	R
▶ RS5D	137	203	170	200	218	80,5	45°	11
▶ RS5D TL	137	203	170	200	218	80,5	45°	11

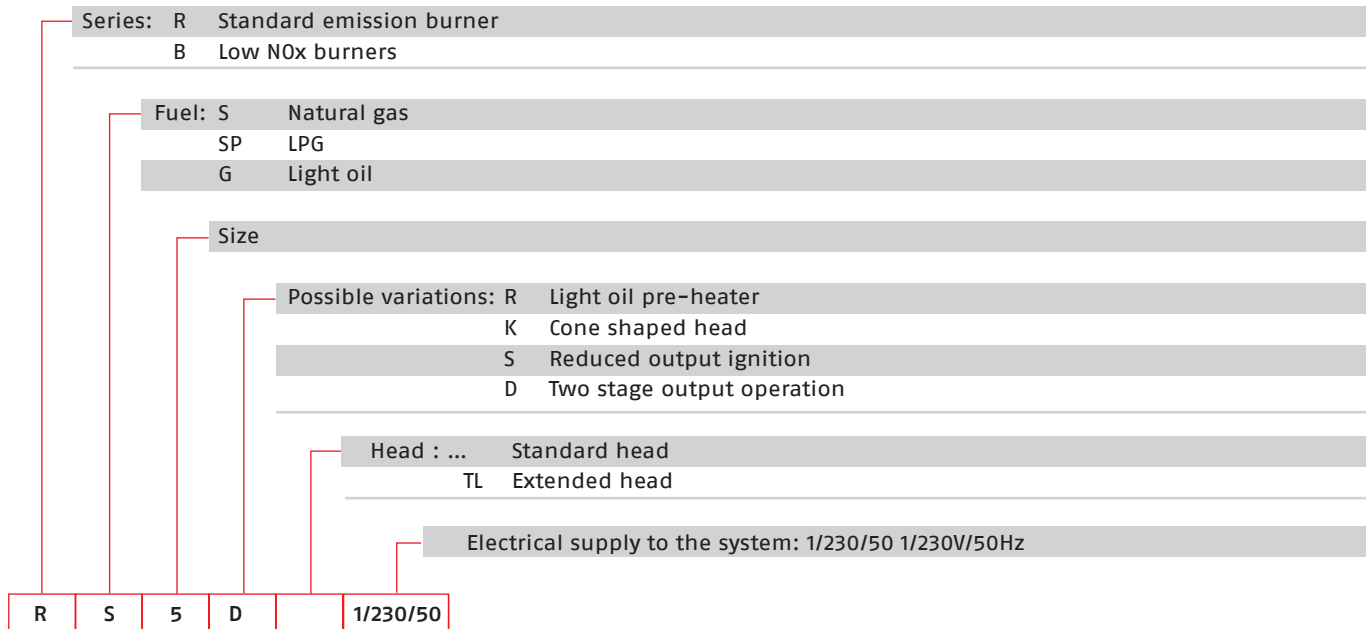
PACKAGING



MODEL	X	Y	Z	kg
▶ RS5D	600	345	430	18
▶ RS5D TL	703	335	435	20

Specification

DESIGNATION OF SERIES



STATE OF SUPPLY

Monoblock, gas burner, completely automatic, with two stage settings fitted with:

- Fan with forward curve blades
- Cover lined with sound - proofing material
- Air damper, with 1st and 2nd stage adjustment, driven by an electric servomotor
- Single phase electric motor 230 V, 50 Hz
- Combustion head fitted with:
 - stainless steel head cone, resistant to high temperatures
 - ignition electrodes
 - ionisation probe
 - gas distributor
 - flame stability disk
- Flame inspection window
- Adjustable air pressure switch, with graduated selector, to guarantee burner lock out in the case of insufficient combustible air
- Microprocessor-based burner safety control box, with diagnostic and remote reset functions
- Protection filter against radio interference (included into burner safety control box)
- IP X0D (IP 40) electric protection level.

Standard equipment:

- Sliding flange
- Flange insulation screen
- Screws and nuts for fixing the flange to the boiler
- 7-pin plug
- 4-pin plug
- Remote control release kit
- Instruction handbook for installation, use and maintenance
- Spare parts catalogue.

Two Stage Gas Burners

GULLIVER RSD SERIES

Available models

Burners

CODE	MODEL	HEAT OUTPUT		TOTAL ELECTRICAL POWER (kW)	CERTIFICATION	NOTE
		(kW)	NATURAL GAS (Nm ³ /h)			
3762058	RS5D 1/230/50	160/208 - 345	16/20,8 - 34,5	0,450	CE - 0085 BN0325	(1)
20052615	RS5D TL 1/230/50	160/208 - 345	16/20,8 - 34,5	0,450	CE - 0085 BN0325	(1)

Net calorific value G20: 10 kWh/Nm³ - Density: 0,71 kg/Nm³.
The burners of RSD series are in according to EN 676.
(1) With plug and socket.

Gas Trains

GAS TRAIN CODE *	GAS TRAIN MODEL	NATURAL GAS		LPG		NOTE
		BURNER (TYPE)	ADAPTER (CODE)	BURNER (TYPE)	ADAPTER (CODE)	
3970542	MB 410/2 - F3SD 20	RS5D		RS5D		(1) (2)
3970543	MB 412/2 - F3SD 20	RS5D		RS5D		(1) (3)
3970582	MB 415/2 - F3SD 20	RS5D		RS5D		(1)

Please see Designation of Gas Train Series in the page before the Catalogue index.

* Gas trains are 230V/50Hz - 220V/60Hz electrical supply.

(1) With installed plug.

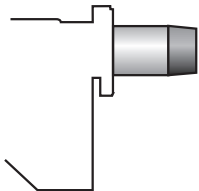
(2) RS5D ≤ 200 kW with natural gas.

(3) RS5D ≤ 300 kW with natural gas.

The valve seal control device is compulsory (conforming to EN 676) on gas trains to burners with a maximum output over 1200 kW.
To select the gas train please refer to the technical data leaflet and/or instruction manual.

Burner accessories

Extended head kit



Burners standard head can be transformed into "extended head" versions by using the special kit.

BURNER	STANDARD HEAD LENGTH (mm)	EXTENDED HEAD LENGTH (mm)	KIT CODE
▶ RS5D	203 ÷ 225	357 ÷ 372	3001016

LPG kit



For burning LPG gas, a special kit is available to be fitted to the combustion head on the burner, as shown in the following table.

BURNER	KIT CODE FOR STANDARD HEAD	KIT CODE (*)	KIT CODE FOR EXTENDED HEAD
▶ RS5D	3001011	3002737	3001011

(*) Kit for LPG with butane amount over 30%, without CE certification

Burner accessories

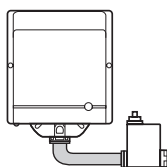
Ground fault interrupter kit



A "Ground fault interrupter kit" is available as a safety device in case of electrical system fault. It is supplied with burners with pin plug.

BURNER	KIT CODE
► RS5D	3001180

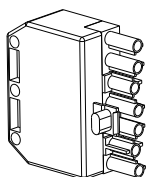
Multibloc rotation kit



There is a special kit available that can be used to install the burner turned 180°. This kit is designed to ensure the gas train valve properly.

BURNER	KIT CODE
► RS5D	3001178

7-pin plug kit



If necessary a 7-pin plug kit is available (in packaging of n. 5 pieces).

BURNER	KIT CODE
► RS5D	3000945

Gas train accessories

Seal control kit



To test the valve seals on the gas train a special "seal control kit" is available.

GAS TRAIN	KIT CODE	KIT CODE
	for 50 Hz operation	for 60 Hz operation
► MB/1 type	3010123	20050030